

PRAISE YOUR NAME

From Prism Music's *VICTORIOUS*

Words and Music by
COREY VOSS, RHYAN SHIRLEY,
and ANNALISE BUSH
Arranged and Orchestrated by
Carson Wagner

80 Worshipfully ♩ = 160

The first system of piano accompaniment consists of two staves. The right staff is in treble clef with a key signature of one flat (Bb) and a 6/8 time signature. It features a melodic line with eighth notes and dotted rhythms, starting with a chord of Eb2. The left staff is in bass clef and provides a harmonic accompaniment with sustained chords, marked with a piano (*p*) dynamic. A chord of F is indicated above the right staff in the second measure.

The second system includes a vocal line and piano accompaniment. The vocal line is on a single staff in treble clef, starting at measure 5. It is marked *LADIES* and *p*. The lyrics "Oh" are written below the vocal line. The piano accompaniment continues with two staves (treble and bass clef) in the same key and time signature as the first system. The right staff has a melodic line with eighth notes and dotted rhythms, with chords Eb2, F, and Eb2 indicated above it. The left staff provides harmonic support with sustained chords.

SOLO
p

E - ven now, I can see dark - ness is fad -

Oh _____ Oh _____

- ing. Walls of fear, brick by brick, will come down. _____

Your light will shine, lift - ing me out _ of the sha - dows. _____

81 0:56

25

Here and now, I know where my break - through is found. —

Gm7 Eb

28

CHOIR and SOLOIST
mf

I'm gon - na sing — my way out of — the val - ley. I'm gon - na shout —

Bb

mf

31

— my way up to the moun - tain. I will take hold of the truth — of Your prom -

F Gm7

34

- ise. I'm gon - na praise, I'm gon - na praise. *mel.* I'm gon - na push

The vocal line consists of three measures. The first measure contains the lyrics '- ise. I'm gon - na praise,'. The second measure contains 'I'm gon - na praise.'. The third measure contains 'I'm gon - na push' with a melisma line above it. The melody is in a B-flat major key signature and features eighth and quarter notes with some rests.

Eb2

F

The piano accompaniment for measures 34-36 features a steady eighth-note bass line in the left hand and chords in the right hand. The right hand chords are primarily triads and dyads, corresponding to the Eb2 and F chords indicated above.

37

— through till ev - ry lie crum - bles. I'm gon - na dance — in the midst — of the rain. —

The vocal line consists of three measures. The first measure contains the lyrics '— through till ev - ry lie crum - bles.'. The second measure contains 'I'm gon - na dance —'. The third measure contains 'in the midst — of the rain. —'. The melody continues with eighth and quarter notes.

Bb

F

The piano accompaniment for measures 37-39 features a steady eighth-note bass line in the left hand and chords in the right hand. The right hand chords are primarily triads and dyads, corresponding to the Bb and F chords indicated above.

40

— I'm gon - na rest — in the arms — of the Fa - ther. I'm gon - na praise, —

The vocal line consists of three measures. The first measure contains the lyrics '— I'm gon - na rest —'. The second measure contains 'in the arms — of the Fa - ther.'. The third measure contains 'I'm gon - na praise, —'. The melody continues with eighth and quarter notes.

Gm7

The piano accompaniment for measures 40-42 features a steady eighth-note bass line in the left hand and chords in the right hand. The right hand chords are primarily triads and dyads, corresponding to the Gm7 chord indicated above.

I'm gon-na praise Your name. Oh _____

Eb2 F Eb2 F

f

Oh _____ Oh _____ Oh _____

Eb2 F

CHOIR and SOLOIST

There's a sound well - ing up from with-in _____ me: Heav-en's pow'r

Bb F Gm7

mf

6

58

call - ing hope to a - rise. _____ *mel.* *f* So, I'm stand - ing tall

call - ing hope to a - rise. _____

So, I'm stand - ing tall

E \flat

B \flat

f

62

here in the strength of Your vic - t'ry _____ 'cause

here in the strength of Your vic - t'ry _____

'cause

F

83 2:24

when You come ev - 'ry wrong is made right. Oh, I'm gon - na sing _____ *mel.*

when You come ev - 'ry wrong is made right.

Oh,

I'm gon - na sing _____

Gm7

E \flat

E \flat 2

69

my way out of the val - ley. I'm gon - na shout my way up to the moun -

Detailed description: This block contains the vocal and bass lines for measures 69 to 71. The vocal line is in a soprano clef with a key signature of two flats (Bb and Eb). The lyrics are: "my way out of the valley. I'm gonna shout my way up to the moun -". The bass line is in a bass clef and provides harmonic support for the vocal line.

Bb F

f

Detailed description: This block shows the piano accompaniment for measures 69 to 71. It consists of a right-hand treble clef and a left-hand bass clef. The right hand plays chords and moving lines, with a forte (f) dynamic marking. The left hand plays a steady bass line. Chord symbols Bb and F are indicated above the right-hand staff.

72

- tain. I will take hold of the truth of Your prom - ise. I'm gon - na praise, -

Detailed description: This block contains the vocal and bass lines for measures 72 to 74. The lyrics are: "- tain. I will take hold of the truth of Your promise. I'm gonna praise, -". The musical notation continues with the same vocal and bass parts.

Gm7

Detailed description: This block shows the piano accompaniment for measures 72 to 74. The right-hand treble clef and left-hand bass clef continue the accompaniment. A Gm7 chord symbol is indicated above the right-hand staff.

75

I'm gon - na praise. I'm gon - na push through till ev - 'ry lie

Detailed description: This block contains the vocal and bass lines for measures 75 to 77. The lyrics are: "I'm gonna praise. I'm gonna push through till every lie". The musical notation continues with the same vocal and bass parts.

Eb F Bb

Detailed description: This block shows the piano accompaniment for measures 75 to 77. The right-hand treble clef and left-hand bass clef continue the accompaniment. Chord symbols Eb, F, and Bb are indicated above the right-hand staff.

crum - bles. I'm gon - na dance ___ in the midst ___ of the rain. ___ I'm gon - na rest ___

Gm7 F

81
___ in the arms ___ of the Fa - ther. I'm gon - na praise, ___ I'm gon - na praise Your

Gm7 Eb F

85
CHOIR
name. Oh ___ Oh ___

Eb2 F Eb2

90

Oh _____ Oh _____ Fear and de-pres - sion,

F F

94

shame and con-fu - sion, — you have to bow, — you have to bow. —

Gm7 Eb Bb

mp

97

All less - er things — that de - mand — my at - ten - tion, — you have to bow, —

F Gm7 Eb

mf

you have to bow. — Fear and de - pres - sion, shame and con - fu - sion, —

mel.

Bb

F

Gm7

mf

you have to bow, you have to bow. — All less - er things — that de - mand —

Eb

Eb2

Bb

F

85 3:58

— my at - ten - tion, — you have to bow, — you have to bow. —

Gm7

Eb

Eb2

Bb

109 *f*

Fear and de - pres - sion, shame and con - fu - sion, — you have to bow, —

f

F Gm7 Eb Eb2

112

you have to bow. — All less - er things that de - mand my at - ten - tion, —

Bb F Gm7

115 *SOLO*

Vocal line for measures 115-117. The melody starts with a quarter note G4, followed by eighth notes A4, Bb4, and C5. There is a quarter rest, then a quarter note D5, followed by eighth notes C5, Bb4, and A4. A quarter rest follows, then a quarter note G4. A fermata is placed over the G4. The line ends with a quarter note G4, followed by eighth notes A4, Bb4, and C5.

you have to bow, — you have to bow. — I'm gon - na sing —

Treble clef piano accompaniment for measures 115-117. It features chords in the left hand and single notes in the right hand. The chords are Eb major and Eb major with a second extension (Eb2). The right hand has a melodic line that mirrors the vocal line.

you have to bow, — you have to bow. —

Bass clef piano accompaniment for measures 115-117. It features a steady eighth-note bass line in the left hand and chords in the right hand. The chords are Eb major and Eb major with a second extension (Eb2).

Eb Eb2

Piano accompaniment for measures 118-120. The right hand has chords Eb major, Eb major with a second extension (Eb2), and Bb major. The left hand has a steady eighth-note bass line. A large watermark is overlaid on this section.

118

Vocal line for measures 118-120. The melody starts with a quarter note G4, followed by eighth notes A4, Bb4, and C5. There is a quarter rest, then a quarter note D5, followed by eighth notes C5, Bb4, and A4. A quarter rest follows, then a quarter note G4. A fermata is placed over the G4. The line ends with a quarter note G4, followed by eighth notes A4, Bb4, and C5.

— my way out of — the val - ley. I'm gon - na shout — my way up to the moun -

Bb

F

Treble clef piano accompaniment for measures 118-120. It features sustained chords in the left hand and single notes in the right hand. The chords are Bb major and F major.

Bass clef piano accompaniment for measures 118-120. It features a steady eighth-note bass line in the left hand and chords in the right hand. The chords are Bb major and F major.

86 4:30

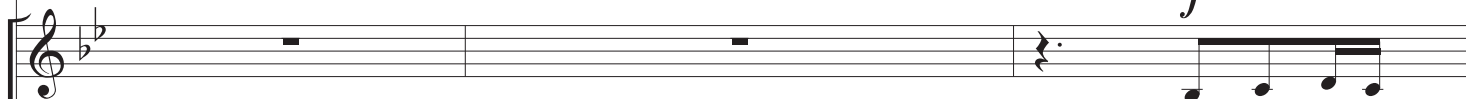
121



- tain. I will take hold of the truth__ of Your prom - ise.

CHOIR and SOLOIST

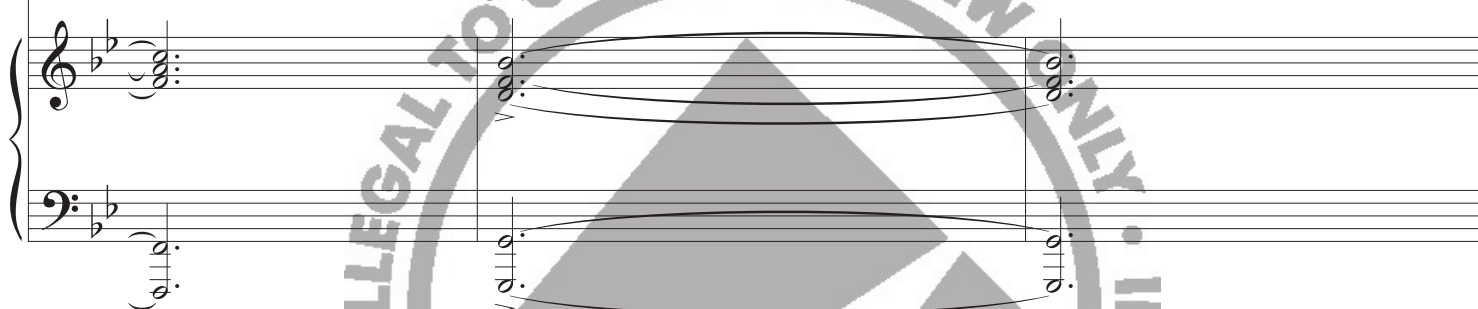
f



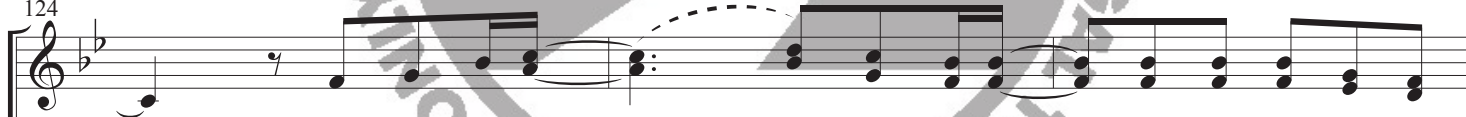
I'm gon - na praise, —



Gm7



124



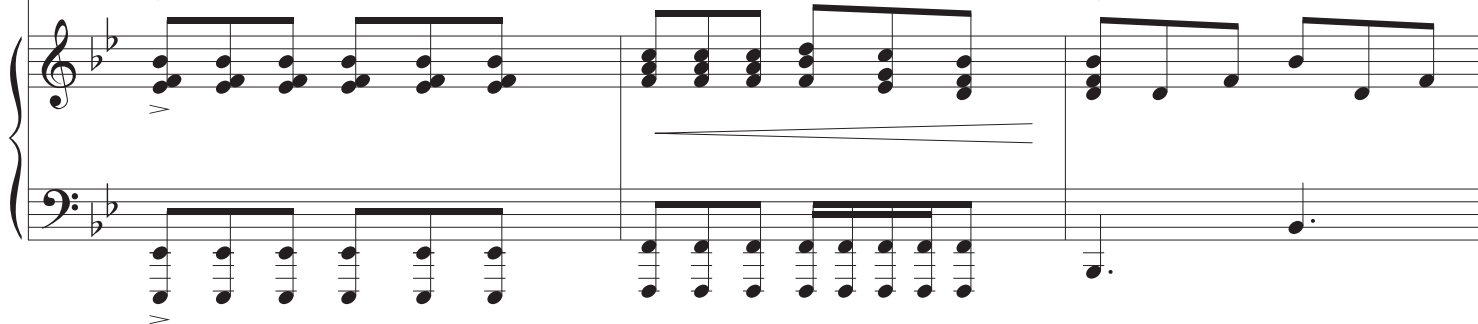
— I'm gon - na praise. — I'm gon - na push — through till ev - 'ry lie



E \flat 2

F

B \flat



127

crum - bles. I'm gon - na dance ___ in the midst ___ of the rain. ___ I'm gon - na rest ___

Gm7 F

130

87 4:54

___ in the arms ___ of the Fa - ther. I'm gon - na praise, ___ I'm gon - na praise. ___

Gm7 Eb Eb2

133

___ I'm gon - na sing ___ my way out ___ of ___ the val - ley. I'm gon - na shout ___

F Bb

136

— my way up to the moun - tain. I will take hold of the truth — of Your prom -

F Gm7

139

- ise. I'm gon - na praise, — I'm gon - na praise. — I'm gon - na push —

E♭ E♭2 F

142

— through till ev - 'ry lie crum - bles. I'm gon - na dance — in the midst — of the rain. —

B♭ Gm7 F

I'm gon-na rest in the arms of the Fa - ther. I'm gon-na praise, I'm gon-na

Gm7

E \flat E \flat 2

praise Your name. Oh Oh

F

E \flat 2

F

Oh Oh

E \flat 2

F

E \flat 2