

REDEEMED BY THE BLOOD OF THE LAMB

From Prism Music's *TAKE IT BACK*

Words and Music by
SEAN CARTER, MELANIE TIERCE,
DAVID GENTILES, WILL YATES
and THE EMERGING SOUND
*Arranged and Orchestrated by
Austin Neal*

20 Confidently ♩ = 162

Chords: F/Bb, F, Dm7, Csus

Dynamic: *f*

5

MALE SOLO
mf

I went down to the crim-son

Chords: F/Bb, F, Dm7, Csus, Bb2

Dynamic: *mp*

10

riv - er, left my bur - dens on the shore. I went down a sin - ner came

Chords: F, Bb2, Cadd4, Bb2

14

up a saint, died with Christ, now I'm re-born. Yes He

Dm7 Bb2 Cadd4 F Bb/F F

18

washed me in His mer-cy, and He cleansed me with His blood. Now I

Bb2 F Bb2 Cadd4

mf

22

stand com-plete, I have been set free; I found life there in the flood.

Bb2 Dm7 Bb2 Cadd4 F

21 0:55

26

TRIO (SAT)

Not the same, I am changed, re-deemed by the blood of the

Bb/F F F/Bb F Dm7

mp

30

Lamb. By His grace, I am saved. I'm His

Cadd4 F Bb F

33

child, for-ev - er I am. Hal - le - lu - jah, re -

Dm7 Cadd4 Bb C Dm7

cresc.

37

deemed by the blood of the lamb.

Csus C F Bb F Dm7

f

22 1:29

41

MALE SOLO

Now I have the liv - ing wa - ter from the well that won't run

Csus Bb2 F Bb F Bb2

mf

45

dry. All the pangs of life have been sat - is - fied by the pre-cious blood of

Cadd4 Bb2 Dm7 Bb2 Cadd4

49

Christ.

TRIO (SAT) and CHOIR
f

Not the same, I am changed, re - deemed by the blood_ of the_

F Eb F Dm7

53

Lamb. By His grace, I am saved. I'm His child, for-ev - er I_

Cadd4 F/Bb F Dm7

57

am. Hal-le - lu - jah, re - deemed by the blood - of - the

Cadd4 Bb C Dm7 Csus C

61

24 2:20

FEMALE SOLO
mp

When it's

lamb.

F Fsus F Fsus

65

time to cross - that riv - er, I will shine in glo - ri - ous light. When He

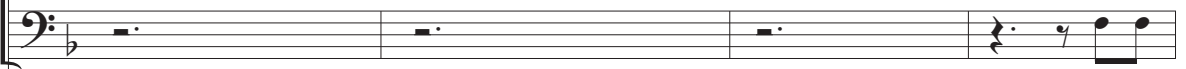
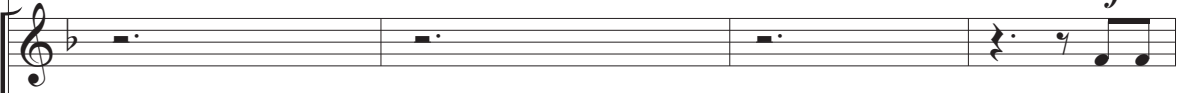
Bb2 F Bb2 Cadd4

subito p

69



CHOIR
mf

B \flat 2

Dm7

B \flat 2

Cadd4

F



73

B \flat 2

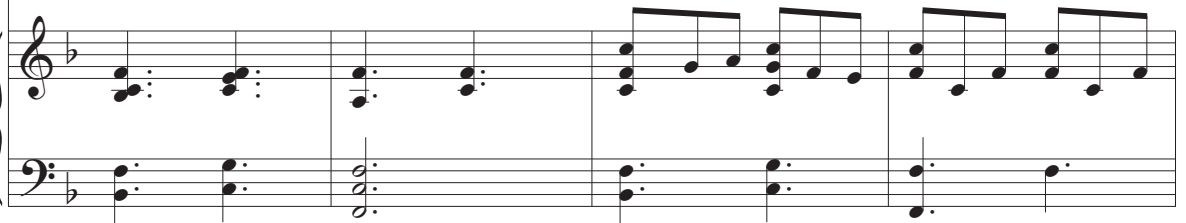
Cadd4

F

B \flat 2

Cadd4

F



25 2:53

TRIO

f

77

Christ! _____ Not the same, I am

ev - er wor - ship Christ. _____ Not the same, I am

Detailed description: This system contains the first two vocal staves and the piano accompaniment. The vocal staves are in a soprano and alto register. The piano accompaniment is in a bass register. The music is in a 4/4 time signature with a key signature of one flat (Bb). The piano part features a steady eighth-note accompaniment in the right hand and a more active bass line in the left hand. Dynamics include *f* and *sfz*. There are repeat signs in the piano part.

Bb2 Cadd4 F(no3)

F Bb

Detailed description: This block shows the piano accompaniment for the first system. It consists of two staves: a treble clef staff and a bass clef staff. The right hand plays a series of chords and moving lines, while the left hand provides a rhythmic foundation. Chord symbols Bb2, Cadd4, and F(no3) are placed above the treble staff. Dynamics *sfz* and *f* are indicated. A large watermark is visible across the page.

81

changed, re - deemed by the blood of the Lamb. By His grace, I am

changed, re - deemed by the blood of the Lamb. By His grace, I am

Detailed description: This system contains the second two vocal staves and the piano accompaniment. The vocal staves continue the lyrics. The piano accompaniment maintains the same rhythmic pattern as the first system. Dynamics include *f*. There are repeat signs in the piano part.

F

Dm7

Cadd4

F Bb

Detailed description: This block shows the piano accompaniment for the second system. It consists of two staves: a treble clef staff and a bass clef staff. The right hand plays chords and moving lines, while the left hand provides a rhythmic foundation. Chord symbols F, Dm7, Cadd4, and F Bb are placed above the treble staff. Dynamics *f* are indicated. A large watermark is visible across the page.

85

1. 2.

saved. I'm His child, for-ev - er I am. Not the am. Hal-le -

saved. I'm His child, for-ev - er I am. Not the am. Hal-le -

F Dm7 Cadd4 Cadd4

89

lu - jah, Hal - le - lu jah, Hal - le -

lu - jah, Hal - le - lu - jah, Hal - le -

B♭ C Dm7 B♭ C F

The image shows a musical score for page 8, measures 85-92. It features three systems of music. The first system (measures 85-88) includes vocal lines with lyrics and piano accompaniment. The lyrics are: "saved. I'm His child, for-ev - er I am. Not the am. Hal-le -". The piano part has chords labeled F, Dm7, and Cadd4. The second system (measures 89-92) continues the vocal lines with lyrics: "lu - jah, Hal - le - lu jah, Hal - le -" and "lu - jah, Hal - le - lu - jah, Hal - le -". The piano part has chords labeled B♭, C, Dm7, B♭, C, and F. A large watermark "ILLEGAL TO COPY - PREVIEW ONLY" is overlaid on the page.

93

26 3:42

lu - jah, re - deemed by the blood of the lamb. Re -

lu - jah, re - deemed by the blood of the lamb. Re -

Basso continuo line for measures 93-96.

B \flat D C E Dm7 Csus C F Gm $\frac{F}{A}$ Csus

Piano accompaniment for measures 93-96.

97

deemed, re - deemed. Re - deemed by the blood of the lamb. Re -

deemed, re - deemed. Re - deemed by the blood of the lamb. Re -

Basso continuo line for measures 97-100.

B \flat 2 $\frac{F2}{A}$ Gm7 Csus F Gm7 $\frac{F2}{A}$ B7(#9)

Piano accompaniment for measures 97-100.

101

deemed, re - deemed, His child and for - ev - er I am. Re -

deemed, re - deemed, His child and for - ev - er I am. Re -

Bb2 F2 Dm7 Csus C Bb C C D2 *Unis.*
A E D E E F# G F# E D

105

deemed! Re - deemed. Re - deemed by the blood of the lamb. Re -

deemed! Re - deemed. Re - deemed by the blood of the lamb. Re -

C2 G2 Am7 G B C D C D G Am7 G2 C#7(#9)
B B F# F#

27 4:24

109

deemed, _____ re - deemed, _____ His

deemed, _____ re - deemed, _____ His

Cadd2 Am7 G2 B Em7

113

child and for-ev-er I am! _____

child and for-ev-er I am! _____ Not the same, I am

TRIO and CHOIR

f

D sus D F# C E D G D G G G C

changed, re - deemed by the blood of the Lamb. By His grace, I am

G

Em7

Dadd4

G

C

saved. I'm His child, for-ev - er I am. Hal-le - lu -

G

Em7

Dadd4

C

D

TRIO

Hal-le - lu - jah, Hal-le - lu -
jah, Hal-le - lu - jah, Hal-le - lu -

Em7

C

D

G

C

E

D

F#

129

jah, re - deemed by the blood_ of the lamb! _____

jah, re - deemed by the blood_ of the lamb! _____

Em7 Dsus D G/C G

133

Em7 Dsus C2