

# NOBODY

From Prism Music's *SOUL'S ANTHEM*

Words and Music by  
JOHN MARK HALL, MATTHEW WEST  
and BERNIE HERMS  
Arranged and Orchestrated by  
Bradley Knight

**55** Medium Rock Anthem ♩ = 80 ♪ = ♩<sup>3</sup>

*SOLO*  
*mf*

Why You ev - er

*E♭(no 3)*  
*mp Synth Pad, Elec Guitar*

3 (1st time)

chose me has al - ways been a mys - ter - y. All my life,

(2nd time)

stage fright, and Da - vid brought a rock to a sword fight. You picked twelve

1st time: R.H. only  
2nd time: add L.H.

*slightly detached*

Cm A♭ E♭

5



I've been told I be-long \_\_\_\_\_ at the end of \_\_\_\_\_ the line with all the oth-er



\_\_\_\_\_ out - sid-ers no - bod-y would-'ve cho-sen; they would change \_\_\_\_\_ the world. The mor-al of the

Cm

A $\flat$

E $\flat$



7



"Not - Quites," and all the "Nev - er - Get - It - Rights." \_\_\_\_\_ But it

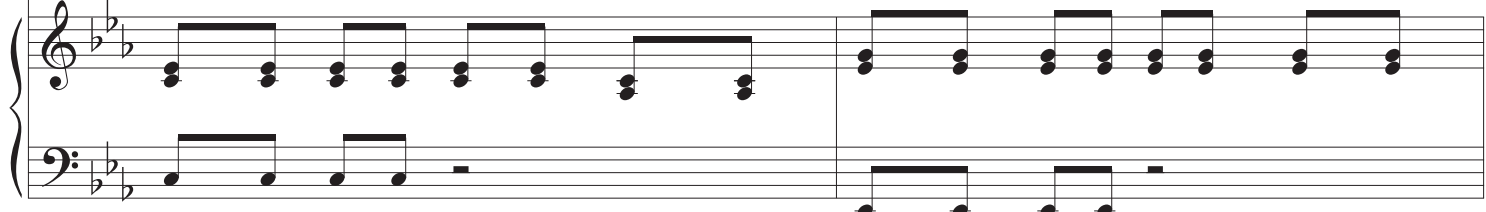


sto - ry is \_\_\_\_\_ ev - 'ry - bod - y's got a pur - pose. So when I hear \_\_\_\_\_

Cm

A $\flat$

E $\flat$



9

turns out they're the ones You were look-in' for all — this time. — I'm just a

— that dev-il start talk-ing to me, say-ing "Who do you think you are?" — I'm just a

*CHOIR f*  
I'm just a

Cm Ab Eb

11

no - bod - y tryin' to tell ev - 'ry - bod - y all a - bout

no - bod - y tryin' to tell ev - 'ry - bod - y all a - bout

Cm Ab Eb

*f* Play L.H. both times

13

Some - bod - y who saved \_ my soul. Ev - er since You

Some - bod - y who saved \_ my soul. Ev - er since You

Some - bod - y who saved \_ my soul. Ev - er since You

Cm

Ab

Eb

Some - bod - y who saved \_ my soul. Ev - er since You

15

res - cued me, You gave my heart a song to sing. \_ I'm liv - ing for the

res - cued me, You gave my heart a song to sing. \_ I'm liv - ing for the

res - cued me, You gave my heart a song to sing. \_ I'm liv - ing for the

Cm

Ab

Eb

res - cued me, You gave my heart a song to sing. \_ I'm liv - ing for the

17

world to see no - bod - y but Je - sus. I'm liv - ing for the

world to see no - bod - y but Je - sus. Liv - ing for the

A $\flat$  E $\flat$  B $\flat$  Cm

19

2nd time

52 1:49

1. 50 0:57

world to see no - bod - y but Je - sus. Mo - ses had

world to see no - bod - y but Je - sus.

A $\flat$  E $\flat$  1. B $\flat$  E $\flat$  (to meas. 3)

2.

Je - sus. —

*MALE SOLO mf*

So let me go down, down, down in his - to - ry — as a - noth - er

Je - sus. —

2.

B $\flat$  Eb Eb Ab

blood bought, — faith - ful mem - ber of the fam - i - ly. — And if they

E $\flat$

B $\flat$

all for - get my name, — well that's fine with me. — I'm liv - ing for the

C $m$

F7

53 2:13

29

world to see no - bod-y but Je - sus. — So let me go down,

CHOIR  
*mf*

Down, down, down in

A $\flat$  E $\flat$  B $\flat$  E $\flat$  E $\flat$

32

as a - noth - er blood bought, faith - ful mem - ber of the

his - to - ry, — blood bought, faith - ful mem - ber of the

A $\flat$  E $\flat$



34

fam - i - ly. — And if they all for - get my name, — well that's

fam - i - ly. — All for - get my name, — well that's

B $\flat$  Cm

54 2:37

36

fine with me. — I'm liv - ing for the world to see no - bod - y but Je - sus. —

fine with me. — I'm liv - ing for the world to see no - bod - y but Je - sus. —

*Tenors optional 8va*

F7 A $\flat$  E $\flat$  B $\flat$  E $\flat$



FEMALE SOLOIST

*ff*

39

Musical staff for Female Soloist, measure 39. The staff shows a melodic line starting with a whole rest, followed by a half note G4, a quarter note F#4, and a quarter note E4. The key signature has two flats (Bb, Eb) and the time signature is 4/4.

I'm just a no - bod - y tryin' to tell

Musical staff for Female Soloist, measure 40. The staff shows a melodic line starting with a whole rest, followed by a half note G4, a quarter note F#4, and a quarter note E4. The key signature has two flats (Bb, Eb) and the time signature is 4/4.

No - bod - y tryin' to tell

Musical staff for Female Soloist, measure 41. The staff shows a melodic line starting with a whole rest, followed by a half note G4, a quarter note F#4, and a quarter note E4. The key signature has two flats (Bb, Eb) and the time signature is 4/4.

No - bod - y tryin' to tell

Musical staff for Bass, measure 41. The staff shows a bass line starting with a whole rest, followed by a half note G3, a quarter note F#3, and a quarter note E3. The key signature has two flats (Bb, Eb) and the time signature is 4/4.

Piano accompaniment for measures 39-41. The piano part features chords and arpeggiated figures. Chords are labeled as B<sub>9</sub> sus, C#m, and A. The dynamic marking *ff* is present. The key signature has two flats (Bb, Eb) and the time signature is 4/4.

SOLOISTS and CHOIR

41

Musical staff for Soloists and Choir, measure 41. The staff shows a melodic line starting with a whole rest, followed by a half note G4, a quarter note F#4, and a quarter note E4. The key signature has two flats (Bb, Eb) and the time signature is 4/4.

ev - 'ry - bod - y all a - bout Some - bod - y who saved - my

Musical staff for Soloists and Choir, measure 42. The staff shows a melodic line starting with a whole rest, followed by a half note G4, a quarter note F#4, and a quarter note E4. The key signature has two flats (Bb, Eb) and the time signature is 4/4.

Piano accompaniment for measures 41-42. The piano part features chords and arpeggiated figures. Chords are labeled as E, C#m, and A. The key signature has two flats (Bb, Eb) and the time signature is 4/4.

soul. Ev - er since You res - cued me, You gave my heart a

E C#m A

45

song to sing. I'm liv - ing for the world to see no - bod - y but

E A E

47

Je - sus. Ev - er since You res - cued me, You gave my heart a

B E B C#m A

49

song to sing. — I'm liv-ing for the world to see no - bod-y but

E A E

51

Je - sus. — Liv-ing for the world to see no - bod-y but

B C#m A E

53

optional DUET

*rit.*

Musical staff for voice 1, measures 53-54. The staff contains a melodic line in treble clef with a key signature of three sharps (F#, C#, G#). The notes are: quarter rest, eighth note G#4, quarter note A4, eighth note B4, quarter note C5, quarter note B4, quarter note A4, quarter note G#4, quarter rest.

No - bod - y but Je - sus!

Musical staff for voice 2, measures 53-54. The staff contains a melodic line in treble clef with a key signature of three sharps (F#, C#, G#). The notes are: quarter rest, eighth note G#4, quarter note A4, eighth note B4, quarter note C5, quarter note B4, quarter note A4, quarter note G#4, quarter rest.

Musical staff for piano, measures 53-54. The staff contains a piano accompaniment in treble clef with a key signature of three sharps (F#, C#, G#). The notes are: whole note chord (F#4, C#5, G#5), quarter note G#4, quarter note A4, quarter note B4, quarter note C5, quarter note B4, quarter note A4, quarter note G#4, quarter rest.

Je - sus. — Liv - ing for the world to see no - bod - y but

Musical staff for piano, measures 53-54. The staff contains a piano accompaniment in bass clef with a key signature of three sharps (F#, C#, G#). The notes are: whole note chord (F#3, C#4, G#4), quarter note G#3, quarter note A3, quarter note B3, quarter note C4, quarter note B3, quarter note A3, quarter note G#3, quarter rest.

C°7

C#m

A

E

Musical staff for piano, measures 53-54. The staff contains a piano accompaniment in treble clef with a key signature of three sharps (F#, C#, G#). The notes are: whole note chord (F#4, C#5, G#5), quarter note G#4, quarter note A4, quarter note B4, quarter note C5, quarter note B4, quarter note A4, quarter note G#4, quarter rest.

*rit.*

55

Musical staff for voice 1, measures 55-56. The staff contains a melodic line in treble clef with a key signature of three sharps (F#, C#, G#). The notes are: whole note chord (F#4, C#5, G#5), quarter note G#4, quarter note A4, quarter note B4, quarter note C5, quarter note B4, quarter note A4, quarter note G#4, quarter rest.

Je - sus.

Musical staff for voice 2, measures 55-56. The staff contains a melodic line in bass clef with a key signature of three sharps (F#, C#, G#). The notes are: whole note chord (F#3, C#4, G#4), quarter note G#3, quarter note A3, quarter note B3, quarter note C4, quarter note B3, quarter note A3, quarter note G#3, quarter rest.

B

E

Musical staff for piano, measures 55-56. The staff contains a piano accompaniment in treble clef with a key signature of three sharps (F#, C#, G#). The notes are: whole note chord (F#4, C#5, G#5), quarter note G#4, quarter note A4, quarter note B4, quarter note C5, quarter note B4, quarter note A4, quarter note G#4, quarter rest.