

Mary's Boy Child

Traditional
arr. by Jim Gray

Island feel ♩ = 122

CD: 35 Percussion begins

Trumpet solo



A

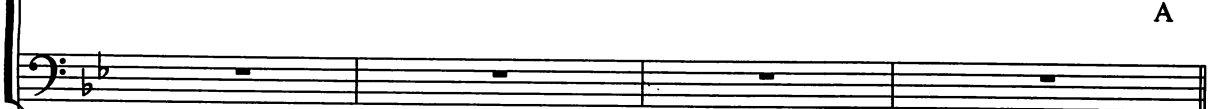


B



Optional start without Trumpet

CD: 36



20

C

long time a - go in Beth - le - hem So the Ho - ly Bi - ble say

B \flat E \flat F E \flat $\frac{E\flat}{F}$ $\frac{Cm7}{F}$ B \flat

24

Ma - ry's boy child, Je - sus Christ, Was

B \flat E \flat $\frac{E\flat}{B\flat}$ B \flat E \flat Cm7

27

D

born on Christ - mas day. The shep - herds watched their

mf

B \flat $\frac{E\flat}{F}$ F7 B \flat B \flat

30 32

flocks by night They saw a bright new shin - ing star _____ And

33

E \flat F E \flat / \bar{F} B \flat

CD: 37

heard a choir__ from heav - en sing__ The mu - sic came__ from a -

36

B \flat E \flat Cm7 B \flat / \bar{F} F7

E

far. Hark! now hear the an - gels sing__ A

39 40

B \flat B \flat E \flat F B \flat D \flat 7/A

new King's born to - day And man will live for - ev -

Gm $\frac{Bb}{F}$ $\frac{C}{E}$ C7 F $\frac{Eb}{F}$ Bb Eb

42

er - more Be - cause of Christ - mas day!

Cm7 $\frac{Bb}{F}$ F7 Bb

45

CD: 38

Now *mf*

Bb $\frac{Eb}{Bb}$ Bb Bb $\frac{Eb}{Bb}$

48

Jo - seph and his wife, Ma - ry, came to Beth - le - hem that night.

mf

B \flat E \flat Cm7 F $\frac{E\mathbb{b}}{F}$ $\frac{Cm7}{F}$ B \flat

51

mf

They found no place to bear her child Not a

B \flat $\frac{E\mathbb{b}}{B\mathbb{b}}$ B \flat E \flat Cm7

54

CD: 39

G *f*

sin - gle room was in sight. Hark! now hear the an -

f

$\frac{B\mathbb{b}}{F}$ F7 B \flat B \flat E \flat F

57 59

gels sing — A new King's born — to - day — And

B \flat D 7 / A Gm C/ E C 7 F E \flat / F

60

man will live — for - ev - er - more — be - cause of Christ - mas

B \flat E \flat Cm 7 B \flat / F F 7

63

day!

CD: 40

B \flat B \flat F \sharp 7 B

66 68

H

Trum - pet sounds

Trum - pet sounds

Trum - pet sounds

Trum - pet sounds

Trum - pet sounds

B B B

69 70

Trum - pet sounds the an - gels sing Lis - ten to what they say

B A B B C#7 F#7

72

CD: 41

That man will live for - ev - er - more be -

F#7 F#9 A# B E C#m

75

I

cause of Christ - mas day! Hark! now hear the an -

B F# B B E F#

78 80

gels sing, — A new King's born — to - day — And

F# B D# A# G#m B F# C# E# C#7 F# E F#

81

CD: 42

man will live — for - ev - er - more — be - cause of Christ - mas

B E C#m B F# F#7

84

J

day! Hark! now hear the an - gels sing — A

B G7 C N.C.

87 88

new King's born — to - day — And man will live — for - ev -

G7 C F

90

er - more — be - cause of Christ - mas day. And

Dm7 Dm7/A C/G G7 C F/G

93

man will live for - ev - er - more be - cause of

C F Dm7 C/G

96

Trumpet solo

Christ - mas

Christ - mas

G7 F/G G7 G7 C F

99

mf

Be - cause of Christ - mas day!

mf

Dm7 C/G G7 C

102