

Choir

PRISM MUSIC
COLLECTION TITLE

Oh Cuan Dulce

Louisa M. R. Stead
William J. Kirkpatrick
Arranged by
Orchestrated by

Description (♩ = 100)

Musical score for the introduction of 'Oh Cuan Dulce'. It features a piano accompaniment in 4/4 time with a tempo of 100. The key signature is B-flat major. The piano part consists of chords and melodic lines. Above the piano part, there are three empty staves for the choir. The piano part includes chord markings: Eb, Bb/Eb, Ab/Eb, Eb, Bb/Eb, and Ab/Eb.

Choir

VERSE

1. SOLO (CHILD)
2. All Kids sing

Musical score for the first verse of 'Oh Cuan Dulce'. It features a piano accompaniment in 4/4 time. The key signature is B-flat major. The piano part includes chord markings: Ab, Eb2, and Eb. The lyrics are: 1. Oh cuán dulce es fiar en Cris - to. Y'en - tre - gar - le; 2. Siem - pre quie - ro fiar en Cris - to. Mi pre - cio - so. The score includes a 'VERSE' marker and a large watermark reading 'LEGAL TO COPY - PREVIEW ONLY'.

Musical score for the second verse of 'Oh Cuan Dulce'. It features a piano accompaniment in 4/4 time. The key signature is B-flat major. The piano part includes chord markings: Db, Eb, Ab, Eb2, and Eb. The lyrics are: to - do'a Él. Es - per - rar en sus pro - me - sas. Sal - va - dor. Que'en la vi - da y'en la muer - te. The score includes a large watermark reading 'LEGAL TO COPY - PREVIEW ONLY'.

Choir

Oh Cuan Dulce - 2

2nd time to CODA ◊

Choir score for measures 14-17. The key signature is B-flat major (two flats). The score consists of three staves: vocal line, piano accompaniment (treble and bass clefs), and a grand staff. The vocal line has lyrics: "Y'en sus sen - das ser - le - fiel! Me sos - tiene con su a - mor." The piano accompaniment features a simple harmonic accompaniment. Measure numbers 14, 15, 16, and 17 are indicated below the staves. Chord changes are marked above the vocal line: A^b at measure 14, B^b at measure 15, and E^b at measure 16. Time signatures change from 4/4 to 2/4 at measure 15 and back to 4/4 at measure 16.

Choir score for measures 18-21. The key signature is B-flat major. The score consists of three staves: vocal line, piano accompaniment (treble and bass clefs), and a grand staff. The vocal line has lyrics: "¡Cris - to! ¡Cris - to! ¡Cuán - to te'a - mo! Tu po - der pro - bas - te'en mí." The piano accompaniment features a simple harmonic accompaniment. Measure numbers 18, 19, 20, and 21 are indicated below the staves. Chord changes are marked above the vocal line: E^b at measure 18, A^b at measure 19, B^b at measure 20, and E^b at measure 21. Time signatures change from 4/4 to 2/4 at measure 20 and back to 4/4 at measure 21.

Choir score for measures 22-25. The key signature is B-flat major. The score consists of three staves: vocal line, piano accompaniment (treble and bass clefs), and a grand staff. The vocal line has lyrics: "¡Cris - to! ¡Cris - to! Pu - ro'y San - to. Siem - pre_ quie - ro fiar_ en". The piano accompaniment features a simple harmonic accompaniment. Measure numbers 22, 23, 24, and 25 are indicated below the staves. Chord changes are marked above the vocal line: E^b at measure 22, A^b at measure 23, E^b at measure 24, and B^b at measure 25. Time signatures change from 4/4 to 2/4 at measure 24 and back to 4/4 at measure 25.

Choir

Oh Cuan Dulce - 3

BRIDGE

E \flat Cm Gm

ti. Él es ver - dad. No fa - lla - rá.

LADIES

ti. Él es ver - dad. No fa - lla - rá.

26 27 28 29 30

A \flat B \flat Cm *D.S. al Coda*
(back to ms. 5)

Él es a - mor, su vi - da dio, por ti'y por mí.

Él es a - mor, su vi - da dio, por ti'y por mí.

31 32 33 34 35

CODA

CHORUS

E \flat E \flat A \flat B \flat E \flat A \flat B \flat

¡Cris-to! ¡Cris-to! ¡Cuán - to te'a - mo! Tu po - der pro - bas - te'en mí.

¡Cris-to! ¡Cris-to! ¡Cuán - to te'a - mo! Tu po - der pro - bas - te'en mí.

36 37 38 39 40

Choir

Oh Cuan Dulce - 4

E^b A^b E^b E^b A^b

¡Cris - to! ¡Cris - to! Pu - ro'y San - to. Siem - pre_ quie - ro

¡Cris - to! ¡Cris - to! Pu - ro'y San - to. Siem - pre_ quie - ro

41 42 43

Detailed description: This block contains the first system of the musical score, spanning measures 41 to 43. It features three staves: a vocal line with lyrics, a piano accompaniment line, and a bass line. The key signature is B-flat major (two flats), and the time signature is 2/4. Chord changes are indicated above the vocal line: E^b (measures 41-42), A^b (measure 42), E^b (measures 42-43), E^b (measure 43), and A^b (measure 43). The lyrics are: "¡Cris - to! ¡Cris - to! Pu - ro'y San - to. Siem - pre_ quie - ro".

B^b E^b

fiar_ en ti. Él es_ ver - dad.

fiar_ en ti.

44 45 46

1. Kids
2. add Adults

Detailed description: This block contains the second system of the musical score, spanning measures 44 to 46. It features three staves: a vocal line with lyrics, a piano accompaniment line, and a bass line. The key signature is B-flat major (two flats), and the time signature is 2/4. Chord changes are indicated above the vocal line: B^b (measures 44-45) and E^b (measures 45-46). The lyrics are: "fiar_ en ti. Él es_ ver - dad.". A large watermark "ILLEGAL TO COPY" is overlaid on the page. To the right of the score, there are two instructions: "1. Kids" and "2. add Adults".

BRIDGE

Cm Gm7 A^b

No fa - lla - rá. Él es_ a - mor, su vi - da dio,

No fa - lla - rá. Él es_ a - mor, su vi - da_ dio,

47 48 49 50 51

Detailed description: This block contains the third system of the musical score, spanning measures 47 to 51. It features three staves: a vocal line with lyrics, a piano accompaniment line, and a bass line. The key signature is B-flat major (two flats), and the time signature is 2/4. Chord changes are indicated above the vocal line: Cm (measures 47-48), Gm7 (measures 48-50), and A^b (measures 50-51). The lyrics are: "No fa - lla - rá. Él es_ a - mor, su vi - da dio,". The piano accompaniment and bass line feature a rhythmic pattern of eighth and sixteenth notes.

Choir

Oh Cuan Dulce - 5

1.

$B\flat$ $E\flat$

— por ti'y — por mi. — — — — — Él es — ver - dad.

— por ti'y — por mi. — — — — — Él es — ver - dad.

52 53 54

2.

TAG $A\flat$ $B\flat$ Cm

Él es — a - mor, su vi - da — dio, — por ti'y — por mi. — — — — —

Él es — a - mor, su vi - da — dio, — por ti'y — por mi. — — — — —

55 56 57 58

$A\flat$ $B\flat$ Cm

Él es — a - mor, — su vi - da — dio, — por ti'y — por mi. — — — — —

59 60 61 62

Choir

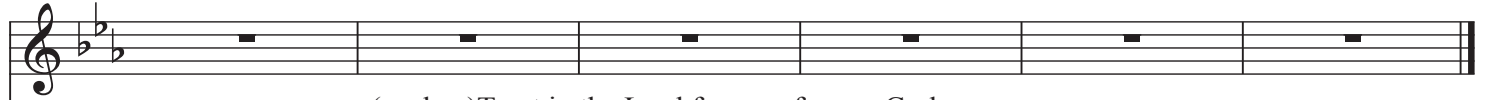
Oh Cuan Dulce - 6

A^b

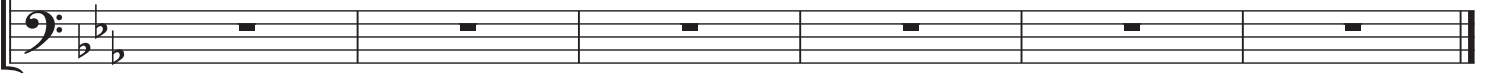
B^b

E^b

E^b



(spoken) Trust in the Lord forever, for our God,
the Lord is the rock eternal. Isaiah 26:4



63 64 65 66 67 68

