

ALL I NEED

From Prism Music's *GRACE UPON GRACE*

Words and Music by
DAVE CLARK and GERON DAVIS

Arranged and Orchestrated by
Carson Wagner

23 Ballad ♩ = 65

D Dsus E D2 F# G A G B G2 B Asus A

mp *f*

3 SOLO *p*

I have

D D2 F# G Bm7 Asus

p *p* *p* *p* *p* *p* *p* *p* *p* *p*

5

walked through the wil - der-ness, lost and a - fraid. My faith

D Acoustic guitar G2 A Bm7

p

p *p* *p* *p* *p* *p* *p* *p* *p* *p*

7

has been test - ed and tried. But

G2 A/C# D2 Piano F# A#

9

just like Your mer - cies are new - ev - 'ry day, I have found

Bm F#m A E G#

11

24 0:36

ev - 'ry need sat - is - fied. And

D/G Em7 Asus A B

cresc. mf

13 SOLOIST *may ad lib*

all that I _____ need, _____ Lord, You're a - ble _____ to sup-

CHOIR
mf

All that I _____ need, _____ hoo, _____ to sup-

E E G# A C#m7 Bsus B

15

ply all my needs _____ from Your _____ ta - ble. _____ And _____

ply all my needs, _____ hoo. _____

E E G# A C#m7 Bsus B

17



ev - en when I _____ can't _____ see, _____ Lord, _____



Ev - en when I _____ can't _____ see, _____



C#m B G#m7 A B D#

19



You make pro - vi - sion for me. _____ You are all _____ I _____ need. _____



You make pro - vi - sion for me. _____



E E# G# A C#m7 B sus

21 25 1:13

mp

I have found in Your prom - is - es

E

A2
C#

D

G2

p

mp

23

strength for each day. And Your Word is a lamp to my feet.

A

Bm7

G2

A
C#

25

I've felt Your for - give - ness; I've been

D

F#
A#

Bm

F#m
A

3

26 1:39

27 *cresc.*

cov - ered by _ grace. Lord, You've _ show - ered _ Your bles - sings _ on _____

E
G#

D
G

Em7

cresc.

29 *f*

_____ me. _____ And _____ all that I _____ need, Lord, You're _____

CHOIR
f

f

All that I _____ need, Lord, You're a -

A sus A B E E/G# A C#m7

31

— a - ble — to sup - ply all my — needs — from Your —

ble — to sup - ply all my needs from Your ta -

Bsus B E G# A C#m7

33

— ta - ble. — And — ev - en when I, —

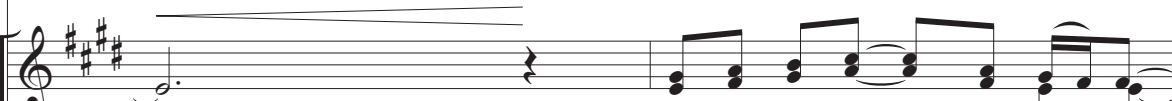
ble. — Ev - en when I — can't see, —

Bsus B C#m B G#m7 A

35



when I ___ can't see, ___ Lord, ___ You make pro - vi - sion for



You make pro - vi - sion for ___ me. _



B
D# E E# A C#m7



37



me. _ You are all I ___ need. ___ Oh _



You are all I ___ need. ___

ten. only



Bsus

E(no3)

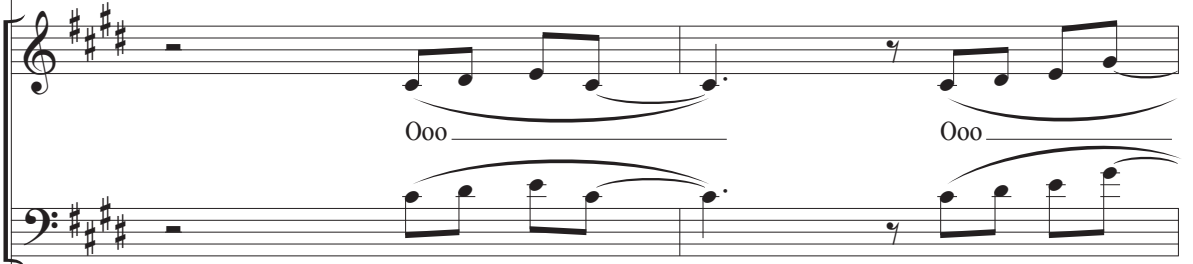


27 2:16

39



When I am hun - gry, - when-ev - er I - thirst, - and



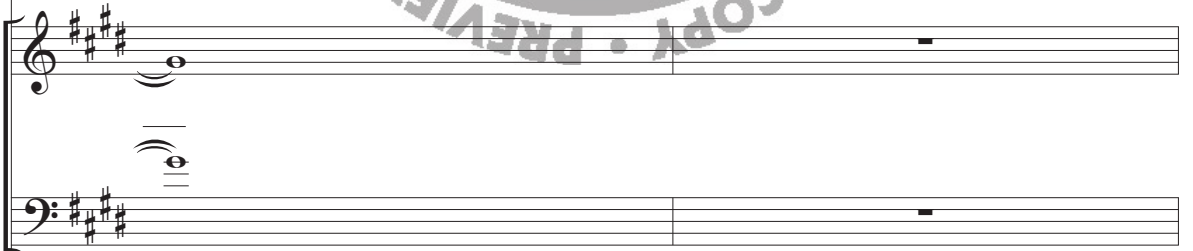
C#m



41

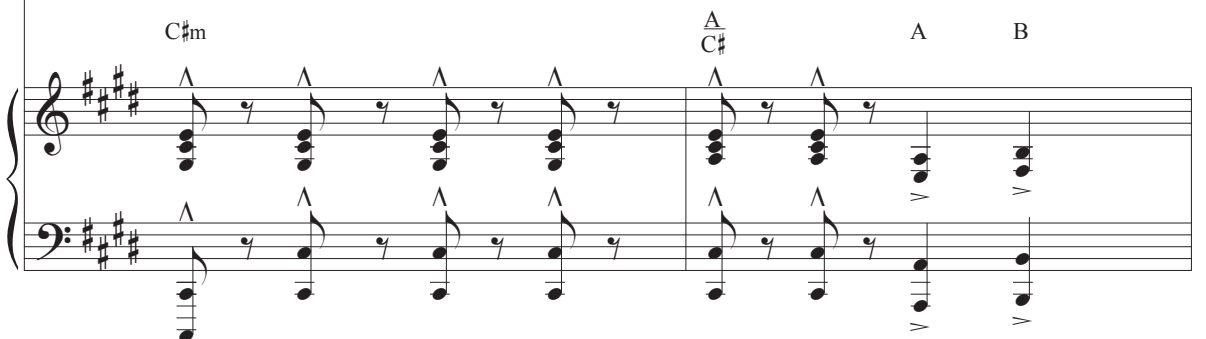


when I'm a - lone and a - fraid. Oh, ³



C#m

A C# A B



43

Musical staff for vocal line starting at measure 43. The key signature is three sharps (F#, C#, G#). The melody consists of eighth and quarter notes, with a triplet of eighth notes in measure 44.

I al - ways know that, for bet - ter - or - worse, You are there

Musical staff for piano accompaniment starting at measure 43. It features a steady eighth-note bass line and chords in the right hand.

I al - ways know that, for bet - ter or worse, You are there

Musical staff for bass line starting at measure 43. It provides a consistent eighth-note accompaniment.

add basses

C#m

N.C.

E D# B C# B A G#

Piano accompaniment for measures 43-44. The right hand plays chords and moving lines, while the left hand plays a steady eighth-note bass line.

45

Musical staff for vocal line starting at measure 45. The melody continues with a *rit.* (ritardando) marking above the staff.

and the way has been made.

Musical staff for piano accompaniment starting at measure 45. The accompaniment features sustained chords and a steady bass line.

and the way has been made.

Musical staff for bass line starting at measure 45. It continues with a steady eighth-note accompaniment.

F#

F#
A#

Bsus

B
A

Piano accompaniment for measures 45-46. The right hand plays chords and moving lines, while the left hand plays a steady eighth-note bass line.

rit.

Musical staff for bass line starting at measure 45. It continues with a steady eighth-note accompaniment.

a tempo

47

Lord, _____ You're a - ble. _____

ff

All that I _____ need, Lord, You're a - ble _____ to sup -

G C D C E Em Dsus D D#

a tempo

49

Yeah, _____ from _____ Your ta - ble. _____ And

ply all my needs from Your ta - ble. _____

G G/B C Em7 Dsus D

51

ev - en when I, _____ when I _____ can't see, _____ Lord, _____

Ev - en when I _____ can't see, _____

Em

D

Bm7

C

D

F#

53

28 3:12

You make pro - vi sion for _____ me. _____ You are all I _____ need. _____

You make pro - vi - sion for me. _____

G

G
B

C

C
ED
F#

D(no3)

55

You are all I need. Oh,

All I need, You are all I need. You

G Am7 G/B Bb C2/A D/F# G Am7 G/B

58 *rit.*

You are all I need.

are all I need.

Bb C2/A D G

rit. *Drum fill*