

# GRACE UPON GRACE

From Prism Music's *GRACE UPON GRACE*

Words and Music by  
MICHAEL BOGGS, JASON COX  
and KELLAN MONROE  
Arranged by Carson Wagner  
and Kellan Monroe  
Orchestrated by Carson Wagner

6 **Ballad** ♩ = 72

Bm G D Bm G D

5 *SOLO*  
*p*

I come with no de - fense; \_\_\_\_\_ can't prove my in - no - cence. \_

Bm G D Bm G

8

\_\_\_\_\_ My on - ly hope re - mains \_\_\_\_\_

D Bm G D

11

grace up-on — grace. Can't pay for what I've — done. —

$\frac{G2}{B}$   $\frac{A}{C\#}$   $G2$   $Bm$   $G$

14

My sin, I can't out - run. —

$D$   $Bm$   $G$   $D$

17

7 1:00

Your mer - cy made a — way — with grace up-on —

$Bm$   $G$   $D$   $\frac{G2}{B}$   $\frac{A}{C\#}$

20

grace. Like an o - cean wave wash - ing o - ver me, come and

*CHOIR*  
*p*

Ooo

Dsus D Bm7 Asus D D/G

23

drown my shame in Your mer - cies deep. Oh, rid my soul of ev-'ry

Ooo

Oh

Bm7 Asus D G2 Bm7 Asus

26

guilt - y stain with grace up-on — grace.

Ooo

Dsus D G2 G2/B A/C# Bm7 G

29

8 1:36

D Bm7 G D

## SOLOIST and CHOIR

*mf*

32

Oh, what a self - less\_ trait, \_\_\_

Bm7

G2

D

*mf*

34

*mel.*  
Your blood for my mis - takes. \_\_\_

Bm7

G2

D

36

My trea - son in ex - change \_\_\_\_\_ for

Bm7 G2 D

38

grace up - on \_\_\_\_\_ grace. Like an *f*

G2 B A# C# Dsus D

The image shows a musical score for page 6, measures 36-38. It features a vocal line with lyrics, a piano accompaniment, and guitar chords. The key signature is D major (two sharps). The time signature is 4/4. The lyrics are: "My trea - son in ex - change \_\_\_\_\_ for" (measures 36-37) and "grace up - on \_\_\_\_\_ grace. Like an *f*" (measures 38). The piano accompaniment consists of a steady eighth-note pattern in the right hand and a simple bass line in the left hand. The guitar chords are: Bm7, G2, D (measures 36-37); G2/B, A#/C#, Dsus, D (measures 38). A large watermark "PREVIEW ONLY - ILLEGAL TO COPY" is overlaid on the page.

40

o - cean\_\_ wave wash-ing o - ver\_\_ me, come and drown my\_\_ shame in Your

Bm7 Asus D G2 Bm7 Asus

43

mer - cies\_\_ deep. Oh,\_\_ rid my\_\_ soul of ev - 'ry guilt - y stain with

D G2 Bm7 Asus Dsus D G2

46

9 2:30

grace up-on\_\_ grace. Like an o - cean\_\_ wave wash-ing

G2 B A# C# Dsus D Bm7 Asus

o - ver me, come and drown my shame in Your mercies deep. Oh,

D G2 Bm7 Asus D G2

rid my soul of ev-'ry guilt - y stain with grace up-on

Bm7 Asus Dsus D G2 G2 B A C#

grace up-on grace up-on grace.

Bm D2 F# G2 A D(no 3) Dsus

*p*



10 3:11

*mp*

59

Grace, grace, God's

D Dsus D G/D

64

grace. Grace that will par - don and cleanse with -

D A A D/A A G

68

in. Grace, grace, God's grace.

D Dsus D G/D Bm7

SOLO  
mf

73



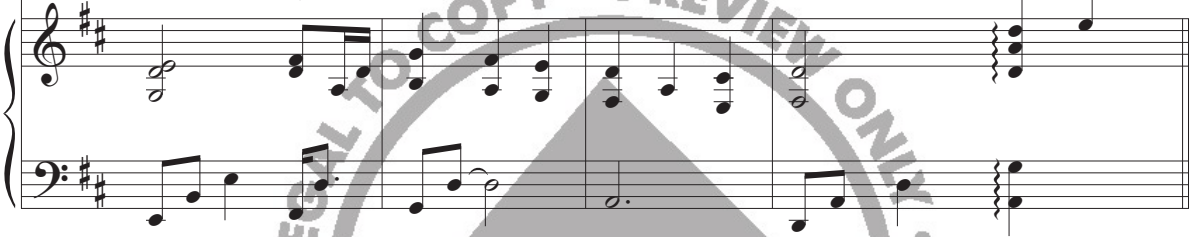
Oh, we thank You for Your grace.

cresc.



Grace that is great - er than all our sin.

Em7 D/F# Em G D/G Em G D/A A D A7sus



77



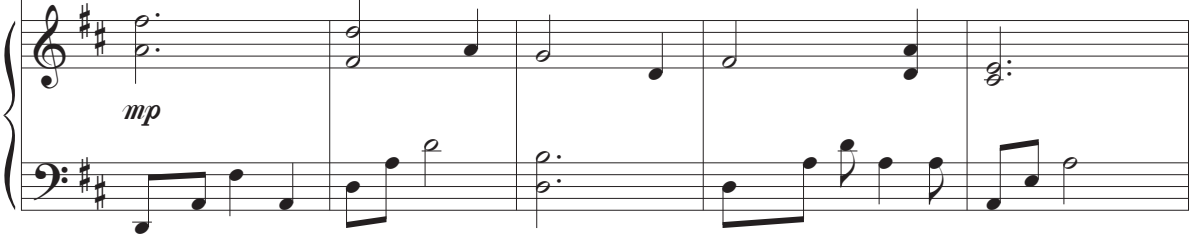
God's un-end - ing grace. Grace that will

mf



Grace, grace, God's grace. Grace that will

D G/D D A



82

par - don and cleanse with - in. Mmm Grace,

par - don and cleanse with - in. Grace,

A  $\frac{D}{A}$  A G D Dsus D

86

grace, God's a - maz - ing grace. Grace that is

grace, God's grace. Grace that is

$\frac{G}{D}$  Bm7 Em7  $\frac{D}{F\#}$

90

great - er than all our sin. Your grace that is

great - er than all our sin. Grace that is

great - er than all our sin. Grace that is

Em D Em D A Bm D F# Em7 D F#

Em G D G Em G D A A Bm D F# Em7 D F#

94

great - er than all our sin.

great - er than all our sin.

great - er than all our sin.

Em D Em D A A G2 Asus D F# G

Em G D G Em G D A A G2 Asus D F# G

98 **11** 4:50

*mf*

Musical staff with treble clef and key signature of two sharps (F# and C#). The staff contains a whole rest followed by a half rest, then a melodic line starting with a quarter note G4, followed by quarter notes A4, B4, C5, D5, E5, and F#5.

Oh, — rid my — soul of ev-'ry

*cresc.*

Two musical staves (treble and bass clef) showing accompaniment. The treble staff has a whole rest followed by a half note G4, then a whole note chord of G4 and B4. The bass staff has a whole rest followed by a half note G2, then a whole note chord of G2 and B2. A large slur covers the final two measures of this system.

Oh

Piano accompaniment system with treble and bass clefs. Chord symbols are placed above the treble staff: Bm7, A C#, Dsus, D, G, Bm, A C#. The music features a steady eighth-note accompaniment in the bass and a more melodic line in the treble.

Musical staff with treble clef and key signature of two sharps. It begins with a whole rest, followed by a half note G4, then a quarter note A4, a quarter note B4, a quarter note C5, and a quarter note D5. A fermata is placed over the final note.

guilt - y stain with grace up-on — grace.

*ff*

Two musical staves (treble and bass clef) showing accompaniment. The treble staff has a whole note chord of G4 and B4, followed by a half note chord of G4 and B4, and a whole note chord of G4 and B4. The bass staff has a whole note chord of G2 and B2, followed by a half note chord of G2 and B2, and a whole note chord of G2 and B2. A large slur covers the final two measures of this system.

grace up-on — grace — Like an

Piano accompaniment system with treble and bass clefs. Chord symbols are placed above the treble staff: Dsus, D F#, G, G2 B, A C#, Dsus, D. The music features a steady eighth-note accompaniment in the bass and a more melodic line in the treble. A dynamic marking *sfz* is present in the bass staff.

104

Wash-ing o - ver me, come and drown my shame in Your

o - cean wave wash-ing o - ver me, come and drown my shame in Your

Bm7 Asus Bm7 Asus

107

mer - cies deep. Oh, rid my soul of ev-'ry guilt - y stain with

mer - cies deep. Oh, rid my soul of ev-'ry guilt - y stain with

D G2 G A Bm7 Asus Dsus D G2

110

grace up-on — grace. — Oh, — rid my — soul of ev-'ry

grace up-on — grace. — Oh, — rid my — soul of ev-'ry

$\frac{G2}{B}$   $\frac{A}{C\#}$  Dsus D G A Bm7 Asus

113

guilt - y stain with grace up-on — grace up-on — Your

guilt - y stain with grace up-on — grace up-on —

Dsus D G2  $\frac{G2}{B}$   $\frac{A}{C\#}$  Bm  $\frac{D2}{F\#}$

116

grace up-on — grace, — un - fail-ing

Detailed description: This block shows the vocal line for measures 116-118. The melody starts with a quarter note 'grace', followed by an eighth note 'up-on' with a slur. A fermata covers the end of the phrase. The second measure begins with a half note 'grace,' followed by a fermata. The third measure starts with a quarter note 'un' and a triplet of eighth notes 'fail-ing'.

Detailed description: This block shows the piano accompaniment for measures 116-118. The right hand plays chords: a quarter note chord for 'grace', an eighth-note chord for 'up-on', and a half-note chord for 'grace,'. The left hand provides a rhythmic accompaniment with eighth notes and chords.

G A D G2

Detailed description: This block shows the piano accompaniment for measures 119-122. The right hand plays chords for G, A, D, and G2. The left hand plays a continuous eighth-note accompaniment.

119

*rit.*

grace. —

Detailed description: This block shows the vocal line for measure 119. It begins with a triplet of eighth notes 'grace.' followed by a fermata. The tempo marking 'rit.' is placed above the staff.

Detailed description: This block shows the piano accompaniment for measure 119, which consists of whole rests in both the right and left hands.

Bm7 Asus D F# G2

*rit.* *freely*

Detailed description: This block shows the piano accompaniment for measures 120-122. The right hand plays chords for Bm7, Asus, D, and F#. The left hand plays chords for Bm7, Asus, D, and F#. The tempo marking 'rit.' is above the first measure, and 'freely' is above the second measure. The piece concludes with a fermata over a G2 chord.