

HIS MERCY IS MORE

1

From Prism Music's *CENTER OF IT ALL*

Words and Music by
MATT BOSWELL
and MATT PAPA

Arranged by Carson Wagner and Kellan Monroe
Orchestrated by Carson Wagner

9 Gently Lifting ♩ = 127

SOLO
p

What

mp

Chords: Eb, Eb/G, Ab, Eb, Bb, Cm7, Ab, Bb, Ab/Bb

love could re-mem-ber no wrongs we have done? Om - ni - scient, all know - ing, He

p

Chords: Eb, Eb/G, Ab, Eb, Bb, Cm

counts not their sum. Thrown in - to a sea — with-out bot - tom or

Chords: Ab, Bb, Eb, Fm7, Eb/G

Copyright © 2016 Getty Music Hymns and Songs/Getty Music Publishing/Love Your Enemies Publishing/
Doxology & TheologyMusicdbamessenger Hymn (Admin Music Services)
All rights reserved. Used by permission.

PLEASE NOTE: Copying of this music is NOT covered by the CCLI license. For CCLI information call 1-800-234-2446.

11

8

shore, our sins, they are man-y; His mer-cy is more.

Ab2 Ab Eb Bb Eb $\frac{Fm}{Eb}$

15

mp

Praise the Lord, His mer-cy is more.

CHOIR mp

Praise the Lord, His mer-cy is more.

mel.

Ab Eb Cm7 Bbsus Ab Eb Bb Bbsus Bb

mf

20

Strong-er than dark-ness, new ev - 'ry morn. — Our sins, they are man - y; His

Strong-er than dark-ness, new ev - 'ry morn. — Our sins, they are man - y; His

Strong-er than dark-ness, new ev - 'ry morn. — Our sins, they are man - y; His

Ab Eb B^b/D Cm Ab E^b/B^b



11 1:08

23

mer - cy is more.

mer - cy is more.

mer - cy is more.

B^b E^b E^b/G A^b E^b B^b C^m

mf

27

What pa-tience would wait_ as we con-stant - ly__ roam? What

What pa-tience would wait_ as we con-stant - ly__ roam? What

$A\flat$ $B\flat$ $\frac{A\flat}{B\flat}$ $E\flat$ $\frac{E\flat}{G}$ $A\flat$ $E\flat$

mp

30

Fa-ther, so ten-der, is call-ing us home? He wel-comes the weak-est, the vil -

Fa-ther, so ten-der, is call-ing us home? He wel-comes the weak-est, the vil -

$B\flat$ Cm $A\flat$ $B\flat$ $E\flat$ $Fm7$

12 1:32

33
8

- est, the poor. Our sins, they are man-y; His mer-cy is

- est, the poor. Our sins, they are man-y; His mer-cy is

- est, the poor. Our sins, they are man-y; His mer-cy is

E \flat G A \flat A \flat E \flat B \flat

37
8

more. Praise the Lord, His mer-cy is more.

more. Praise the Lord, His mer-cy is more.

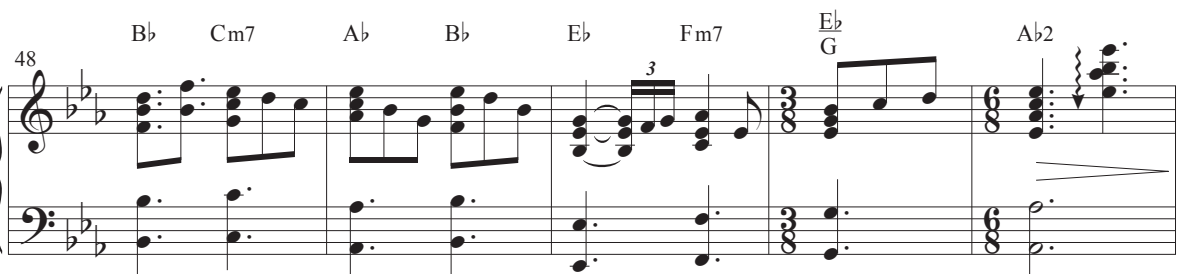
more. Praise the Lord, His mer-cy is more.

E \flat A \flat E \flat Cm7 Bbsus A \flat E \flat

mf

B \flat B \flat susB \flat A \flat E \flat B \flat
D

Cm7

A \flat E \flat
B \flat B \flat E \flat E \flat
GA \flat E \flat 

53 **13** 2:19

SOLO
p

What rich-es of kind-ness He lav-ished on us. His

p

Ab Eb Bb Eb G Ab Eb

57

blood was the pay - ment; His life was the cost. We stood

Bb Cm7 Ab Bb

59

— 'neath a debt we could nev - er af - ford. Our

CHOIR
p *f*

Oh Ah

Ab Fm7 Eb G Ab

p *f*

62

sins they are man - y; His mer - cy is more.

His mer - cy is more. So much
ten. only

add Basses

sfz *f*

Ab Eb Bb Bb Eb Fm Eb

65

Praise the Lord, His mer - cy is more.

more! Praise the Lord, His mer - cy is more.

Eb Ab Eb Cm7 Bbsus Ab Eb

69
8

Strong-er than dark - ness, new ev - 'ry morn. Our

Strong-er than dark - ness, new ev - 'ry morn. Our

B \flat Bbsus B \flat A \flat E \flat B \flat D Cm7

14 3:08

72
8

sins, they are man - y; His mer - cy is more.

sins, they are man - y; His mer - cy is more. Praise the Lord, His mer - cy is

A \flat E \flat B \flat E \flat A \flat

DRUMS!

76 *ff*

Strong-er than dark - ness,

ff

more.

Strong-er than dark - ness,

Bb(no 3) Bb F

ff

straight

79

new ev - 'ry morn. — Our sins, they are man - y; His mer - cy is more. —

new ev - 'ry morn. — Our sins, they are man - y; His mer - cy is more. —

A C# Dm C Bb F C Bb D C E F Gm7 E A

82

Strong-er than dark - ness, new ev - 'ry morn. Our

Strong-er than dark - ness, new ev - 'ry morn. Our

B \flat F $\frac{A}{C\sharp}$ A Dm C

85

sins, they are man - y; His mer - cy is more. Our sins, they are man - y; His

sins, they are man - y; His mer - cy is more. Our sins, they are man - y; His

B \flat F C Dm $\frac{E}{A}$ B \flat F

The image shows a musical score for two systems. Each system consists of three staves: a vocal line (treble clef), a piano accompaniment line (treble and bass clefs), and a chord chart. The first system (measures 82-84) has the lyrics 'Strong-er than dark - ness, new ev - 'ry morn. Our'. The second system (measures 85-87) has the lyrics 'sins, they are man - y; His mer - cy is more. Our sins, they are man - y; His'. The chord chart for the first system shows chords Bb, F, A/C#, A, Dm, and C. The chord chart for the second system shows chords Bb, F, C, Dm, E/A, Bb, and F. A large watermark 'ILLEGAL TO COPY' is overlaid diagonally across the page.

88



mer-cy is more. Our sins, they are man - y; His mer - cy is more. _____



mer-cy is more. Our sins, they are man - y; His mer - cy is more. _____



C Dm $\frac{C}{E}$ F B \flat F C C(no 3) F $\frac{F}{A}$

92



His mer-cy is more! _____



Oh _____ His mer-cy is more! _____



B \flat F C Dm7 B \flat C $\frac{B\flat}{D}$ C Dm7 $\frac{C}{E}$ F

rit. *a tempo*